

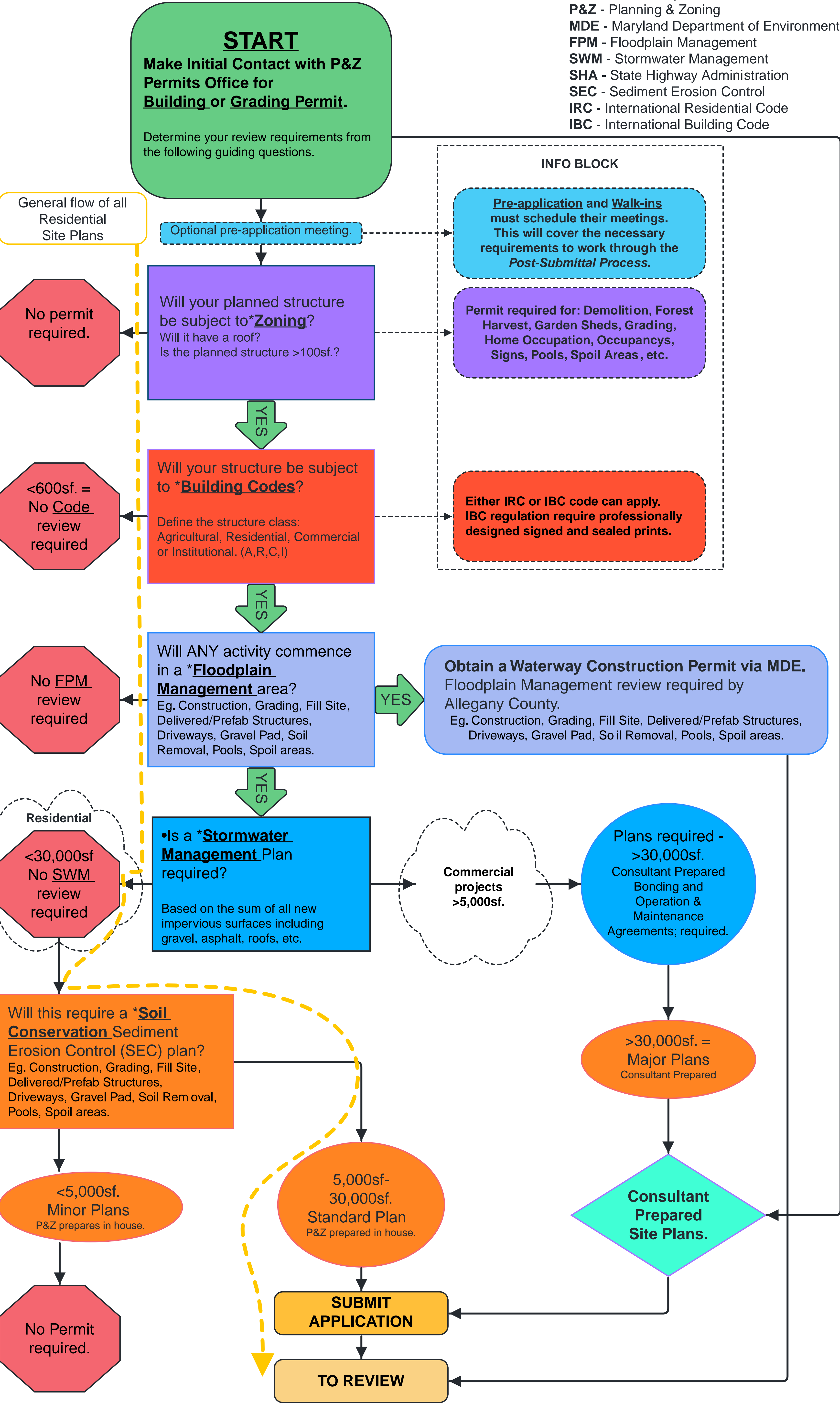
Pre-Submittal Review

ALLEGANY

COUNTY

(A general Planning and Zoning guide regarding the order of operations for permitting land development.
Additional conditions or restrictions may apply depending on the project.)

Abbreviation Key:
P&Z - Planning & Zoning
MDE - Maryland Department of Environment
FPM - Floodplain Management
SWM - Stormwater Management
SHA - State Highway Administration
SEC - Sediment Erosion Control
IRC - International Residential Code
IBC - International Building Code



Review Requirements

Planning & Zoning

YES NO

Building Codes

YES NO

Floodplain Mgmt.

YES NO

MDE - Waterway Construction Permit

YES NO

Stormwater Mgmt.

YES NO

Sediment Erosion Control Plan

YES NO

Consultant Prepared Site Plans

YES NO